



CONSOLE VAULT®

INNOVATIVE SECURITY SOLUTIONS

Installation Sheet Model: 1026A



Fig. 1



Fig. 2

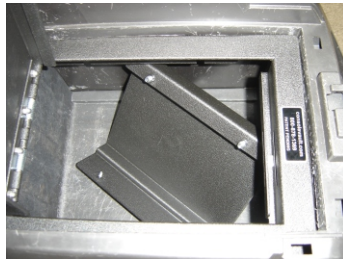
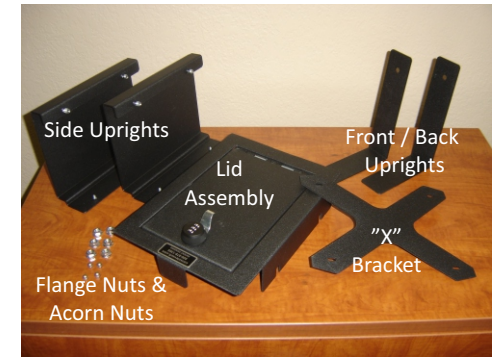


Fig. 3



Fig. 4



Fig. 5

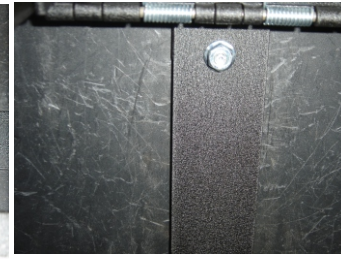


Fig. 6

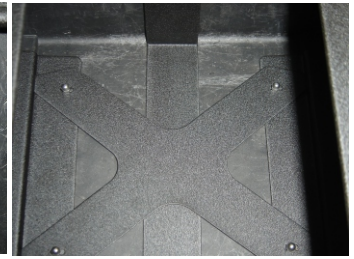


Fig. 7

- 1) Completely remove contents from your factory console.
- 2) Take the lid assembly and place into the console, you will need to angle the piece to fit through the opening. See figure 1 and figure 2
- 3) Take the passenger side upright (this is the shorter of the two) and place it inside the console. See figure 3
- 4) Reach into the console and lift the lid assembly up into position and put the driver side upright into place. Using the 13mm flange nuts that came with your vault thread them into place. Only finger tighten at this time. See figure 4. Repeat procedure for the driver side upright.
- 5) Place the front and back uprights into their positions. Pieces should butt up together not overlap. See Figure 5. Finger tighten one 13mm flange nut into the front and back uprights.
- 6) Place the "X" bracket into place, see figure 7. This is designed to fit very tight, piece should sit flush. Secure bracket into place using the acorn nuts.
- 7) Make sure the Vault is in its proper position. Now tighten all hardware.

consolevault.com

800-878-1369



CONSOLE VAULT®

INNOVATIVE SECURITY SOLUTIONS

Installation Sheet Model: 1026B



Fig. 1



Fig. 2

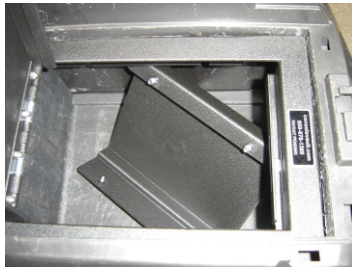
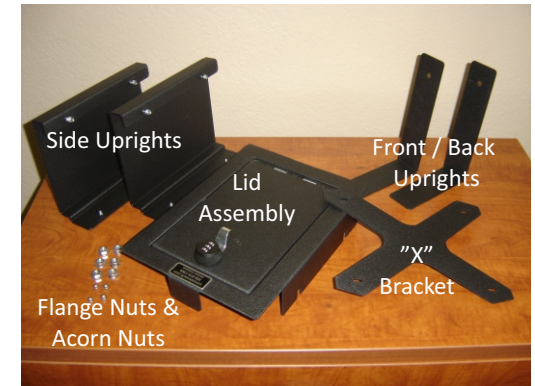


Fig. 3



Fig. 4

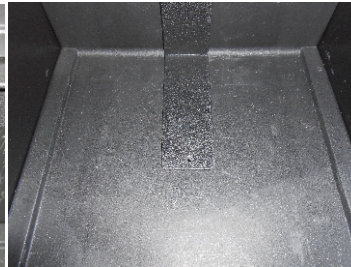


Fig. 5



Fig. 6

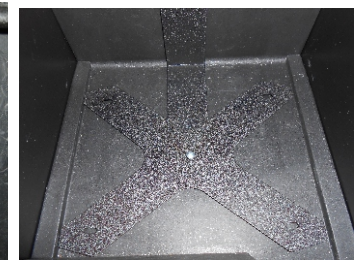


Fig. 7

- 1) Completely remove contents from your factory console.
- 2) Take the lid assembly and place into the console, you will need to angle the piece to fit through the opening. See figure 1 and figure 2
- 3) Take the passenger side upright and place it inside the console. See figure 3
- 4) Reach into the console and lift the lid assembly up into position and put the passenger side upright into place. Using the 13mm flange nuts that came with your vault thread them into place. Only finger tighten at this time. See figure 4. Repeat procedure for the driver side upright.
- 5) Place the back upright (this is the upright with a hole) into its positions. See Figure 5. Finger tighten one 13mm flange nut into the back upright. See figure 6.
- 6) Place the "X" bracket into place, see figure 7. This is designed to fit very tight, piece should sit flush. Secure bracket into place using the acorn nuts.
- 7) Make sure the Vault is in its proper position. Now tighten all hardware. Notice that there is a hole in the "X" bracket, using the self tapping screw thread the screw down through the hole through the back upright and into the plastic of the factory console.

consolevault.com

800-878-1369